

The Leading Edge



Quarterly News from Miller Edge, Inc.

End User Solution: Levels of Protection Guide

Easily Identify Risks & Safeguarding Solutions for Commercial Overhead Doors

With all the available options for entrapment and hazard zone protection, determining and understanding the best safety device for a safe motorized commercial door can be overwhelming.

Our new Levels of Protection guide leads end users through assessing the risks for their distinct environments and aiding them in identifying and selecting the most suitable safeguarding solutions for their motorized commercial overhead doors. [Read more...](#)

[Download the Guide](#)

Unique Environments
Require Specialized
Door Safety
Solutions



Download the
Essential Customer
Education Tool



FEATURE

Live Webinar: ANSI/CAN/UL 325: 2020

ANSI/CAN/UL 325: 2020

Safety Essentials For Your Door or Gate Business



DAVID MAKEPEACE
MillerEdge



STEVE KUSCSIK
UL Solutions



AMANCIO SANCHEZ
MillerEdge

Miller Edge recently hosted a live webinar addressing ANSI/CAN/UL 325: 2020, the new safety Standard in Canada, which went into effect on February 28, 2023.

Attendees learned about the Standard's history and regulatory landscape from David Makepeace, General Sales Manager at Miller Edge; Amancio Sanchez, International Sales Manager: Americas at Miller Edge; and Steve Kuscsik, Principal Engineer at UL Solutions.

[Read more...](#)

LIVE WEBINAR

Wednesday, July 19, 2023, 2 p.m. ET



[Watch On-Demand](#)

PRODUCT SPOTLIGHT

A Residential Parking Curb with a Promotional Advantage



ParkDoc is a residential parking curb that allows a homeowner to find their prescribed parking spot. Unlike other parking aids, ParkDoc gives an installer the chance to market their garage door business by customizing ParkDoc with their company's information, keeping their business front of mind for homeowners. [Read more...](#)



NEW PRODUCTS

New! Photo Eye Conduit Enclosure Kit

Compatible with TruGuard™ (TG-R-K10) & OptiGuard™ (OG-T-K10)



The Photo Eye Conduit Enclosure Kit (PE-CON-K10) pairs seamlessly with TruGuard (TG-R-K10) and OptiGuard (OG-T-K10) photo optic systems by Miller Edge.

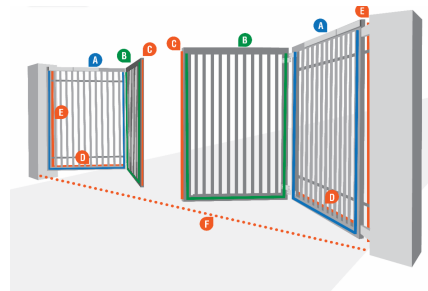
The integrated 3/4" Type-C conduit body provides a protective pathway for wires in installations using conduit while ensuring a clear connection to operator controls. [Read more...](#)

INDUSTRY UPDATES

Automated Vehicular Bifold Gates

Defined in ANSI/CAN/UL 325: 2023 Safety Standard

On February 21, 2023, revisions to ANSI/CAN/UL 325 included clarification to entrapment zones located on vehicular bifold gates. As your resource in universal gate safety, shown here are potential mounting locations for Miller Edge safeguarding solutions on a bifold gate. [Read more...](#)



MILLER EDGE UPDATES

US West Region

New Regional Sales Manager

Brian Vainisi joined Miller Edge as Western Regional Sales Manager in July. Brian has over a decade of



sales and operations experience. He has held notable roles in product training, account management, and project consulting while building strong relationships with general contractors, manufacturers, architects, and end users. [Read more...](#)

ARCHITECT'S CORNER

Safeguarding Building Designs

On the Miller Edge CADdetails profile, architects can access product specifications, view product listings on various door and gate styles, and download technical drawings. These drawings include technical details and elevation drawings, providing architects with the ability to choose the right safety product for the type of door or gate they are specifying. [Read more...](#)

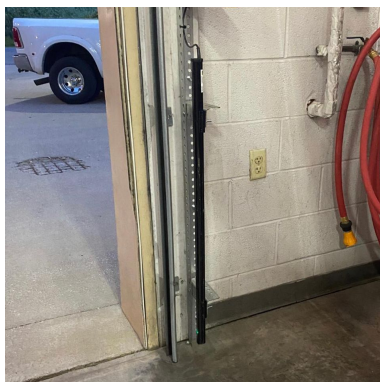


DEALER SPOTLIGHT

Case Study: Monitored Light Curtain / MLC-K36

In Partnership with Overhead Door Company of Lexington™

The Genuine. The Original.



Miller Edge partnered with Overhead Door Company of Lexington to find the optimal photo optic sensor to improve traffic flow and reduce damage to fire trucks at the Winchester Fire Department in Winchester, Kentucky.

The fire station, equipped with six overhead sectional doors, ran into vehicle detection issues due to the fact that fire trucks fluctuate in height based on how much water they carry. [Read more...](#)

[Download the Case Study](#)

TALK TO THE TECH

TechTip: Coil Cords vs. Retracting Reels

Sensing Edge Wiring Methods for Commercial Overhead Doors

Using the correct components and tools on the job is always important when installing safety

devices. Were you aware that a sensing edge's wiring method should be selected based on whether a system is monitored or non-monitored?

When deciding between a coil cord and a retracting reel, use the following: [Read more...](#)



EVENTS

Tradeshows

WASA 2023 Trade Show
September 28-29, 2023
Booth #39
Las Vegas, NV

**Fall IDA EduCon
& Trade Show**
October 17-20, 2023
Booth #305
Milwaukee, WI

Door Safety Education

An 8-Part Series in Partnership
with Service Spring Corp.

Mastering Wireless Sensing Edges
September 21: Orlando, FL

**Advanced Sensing Edges:
Diagnosing, Troubleshooting & Beyond**
September 22: Dallas, TX

Access Control: Intelligent Motion Detection
November 2: Phoenix, AZ



More From Miller Edge

PRESS ROOM | MyEDGE™

