

# TruGuard™

TG-R



## MONITORED REFLECTIVE PHOTO EYE

The Miller Edge TruGuard monitored reflective photo optic system combines an emitter and receiver in the same housing. The reflector, equipped with hood for added sunlight immunity, returns the photo optic beam to the emitter/receiver unit. This system functions as a protective barrier guarding an entrapment or hazard zone. When an obstruction interrupts the beam, a signal is sent to motor controls to stop and/or reverse motion. A visible light beam eases alignment to the reflector making it easy to install.



### APPLICATIONS

- Commercial motorized doors
- Automated vehicular gates

### FEATURES

- 30 ft. range
- Output options for operator compatibility (model dependent): 10K, pulsed, N.C., and N.O.
- Easy install and minimal upkeep with reflector
- Polarized beam and corner cube reflector reject false reflection and increase sunlight immunity
- Emitter/receiver mounts vertically or horizontally
- Durable mounting bracket/hoods provide added protection against sunlight, moisture, and debris
- Optional Photo Eye Conduit Enclosure Kit (PE-CON-K10) accessory for 3/4" conduit
- IP67 housing protects against moisture and dust
- UL 325 Recognized Component
- 2-year warranty

610-869-4422  
www.milleredge.com






# TruGuard™

## TG-R

### GENERAL SPECIFICATIONS

#### PERFORMANCE

Operating Range	6-30 ft. (2-9 m)
Number of Elements	1 element
Maximum Ambient Light	>100,000 lux
Aperture Angle	±3°
Reflector	Polarized corner cube
Operating Temperature	-13°F to +141°F, (-25°C to +55°C)
Agency Approvals	 <b>us</b> UL 325 Recognized Component (10K, pulsed, and N.C. models only)

#### ELECTRICAL

Power Source	12-40 volts DC, 24-48 volts AC
Current Consumption	<40 mA
Relay Rating	2 A @ 40 volts AC/DC

	<b>TG-R-K10</b>	<b>TG-R-PKIT</b>	<b>TG-R-NO-K10</b>
Output*	10K, N.C.	Pulsed (includes SM-102)	N.O., N.C.

	<b>Emitter/Receiver</b>	<b>Reflector/Hood</b>
<b>PHYSICAL</b>		
Dimensions	EM/RX: 0.75 W x 2.5 H x 1.38 D in. (19 x 64 x 35 mm) Bracket: 1.75 W x 4 H x 2.38 D in. (44 x 102 x 60 mm)	Reflector/hood: 3.9375 W x 3.9375 H x 1.86 D in. (100 x 100 x 47 mm)
Weight	EM/RX: 5.5 oz. Bracket: 6.5 oz.	Reflector/hood: 6.5 oz.
Housing Material	EM/RX: Polycarbonate, PMMA lens Bracket: Galvanized steel	Reflector: PMMA/ABS Hood: Plastic
LED Indicators	2: Power, alignment	-
Cable	6-ft., 20 AWG	
Mounting Orientation	Horizontal, vertical	Vertical
Degree of Protection	IP67	-

\*Contact your Miller Edge Sales Rep. for operator compatibility

### INCLUDED

- Emitter/receiver
- Emitter/receiver bracket/hood
- Reflector
- Reflector hood

### ACCESSORIES

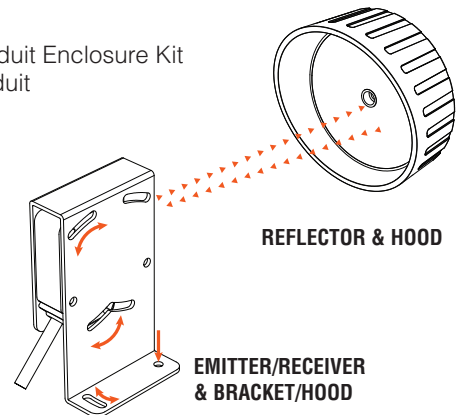
- PE-CON-K10: Photo Eye Conduit Enclosure Kit with conduit body for 3/4" conduit



PE-CON-K10



Conduit and fitting not included



REFLECTOR & HOOD

EMITTER/RECEIVER & BRACKET/HOOD

Contact Miller Edge to ensure compatibility.

© Miller Edge, Inc. All rights reserved

TG-R\_20250606